

# selektta by

STEEL FOLDING STEPS

# K40

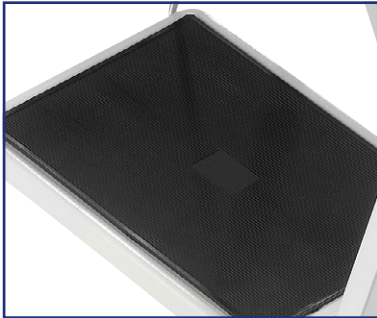
BASICLINE



## STEEL FOLDING STEPS

# K40

## BASICLINE



Large steps.



Safety locking mechanism.



Handy rail.



Flat foldable.

### K40 BASICLINE

- Made of robust steel, white powder-coated
- Large steps with non-slip mats
- Hinged lock (safety locking mechanism)
- Handy square-tube rail

- Sturdy plastic feet
- Flat foldable
- Maximum load capacity 150 kg

4396-200	2	A=2.46 m B=0.46 m	A=0.82 m B=0.48 m C=0.54 m	A=0.90 m B=0.48 m C=0.055 m	max. 150 kg	4.8 kg	A=1 B=36	
4397-200	3	A=2.69 m B=0.69 m	A=1.07 m B=0.48 m C=0.75 m	A=1.16 m B=0.48 m C=0.06 m	max. 150 kg	6.8 kg	A=1 B=36	